

# 4 Preparing for Wind & Water Disasters

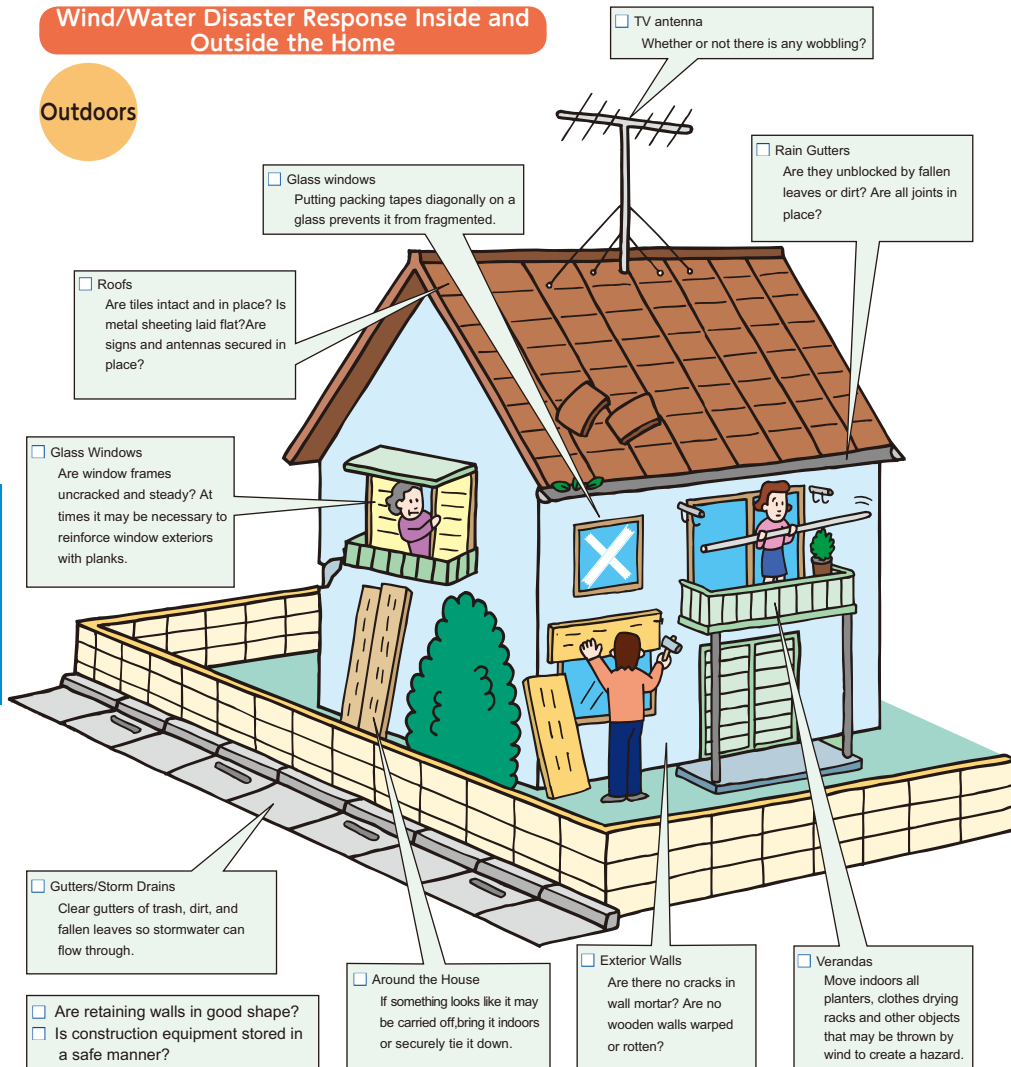
## Household Preparations

### Household Preparations for Wind & Water Disaster

Wind and water disasters caused by typhoons and concentrated rainfall can have a large impact on the lives of city residents. While staying prepared by being aware of weather developments, we should have a response plan ready before the actual event occurs.

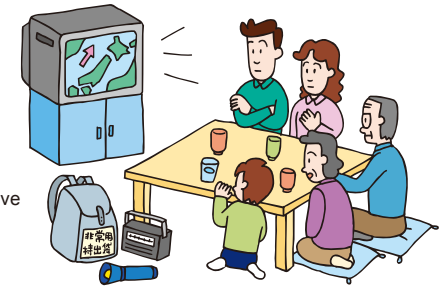
#### Wind/Water Disaster Response Inside and Outside the Home

#### Outdoors



#### Indoors

- Prepare flashlights and pocket radios.
- Prepare important emergency/survival items.
- Take notice of weather alerts and don't unnecessarily leave the house.
- Guarantee stores of food and water.
- As there is a chance of indoor flooding, move all appliances and food to a high place.
- Take elderly, infants and sick family members to a safe location.
- Prepare a smartphone charger and mobile battery.



#### Underground Spaces For Those with Basements Underground Parking Areas

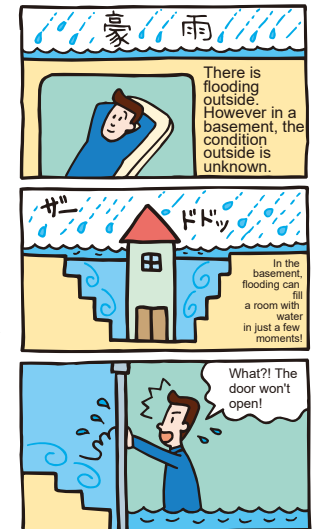
- In low areas or basins, where water can easily flow in, pile sandbags or use boards to stop water.



Water can break through in an instant and make you a victim without you realizing it! During monsoon season, pay close attention to weather alerts, and prepare sandbags and planks so you can respond quickly.

When external conditions cannot be determined from indoors, water pressure may prevent doors from being opened, and there is concern that water may begin to flow inside. In addition, lights may go out and elevators may become inoperable.

Could this Happen in Underground Areas During a Flood?



#### When Can Water Disasters Occur?

- When rivers overflow their banks  
In Tokyo, improvements are being made to riverbanks to allow for 75mm of rain per hour to be absorbed, and storm drain flow is likewise being improved. Thanks to this, river flooding has decreased, but the risk of overflow remains during periods of heavy rainfall in a short period, or a sudden rise in water level in a specific area.
- If wastewater counter-currents cause manholes to overflow  
Because concrete and asphalt covers much ground surface, rainwater is often not absorbed by the earth. Due to this, rainwater can concentrate quickly in sewers and riverbeds without being fully drained off by basins or pipes, causing water disasters to occur even without river flooding.
- Basement Flooding  
As rainwater flows in to basements or underground parking areas, incomplete drainage causes increase in water disasters.

## Take Notice of Weather Alerts

Typhoons bring strong winds and heavy rainfall. Additionally, from the latter part of the rainy season to the summer, there is a period of frequent, intense rainfalls. So it is also necessary to be aware of line-shaped precipitation zones/weather systems. Even during sunny days, if the atmospheric conditions are unstable, there may be sudden, short-duration downpours concentrated in small areas that are so intense they feel like a waterfall.

- Meguro City Weather (Meguro City Disaster Prevention Weather Reports)

You can find out Meguro area weather and rainfall reports and river flow levels on the Meguro City homepage.

For more information, visit the Meguro City website (Refer to Meguro City Disaster Prevention Weather Reports).

- Disaster Prevention Weather Reports—Automated E-mail Service

A mail service has been established for residents who wish to be quickly informed about abnormal weather conditions and disaster prevention information (Alerts from the National Meteorological Agency) Register on the City's homepage or with the QR code on the right.



Natural disaster information e-mail registration page

## Receiving “Meguro City Disaster Prevention Weather Report” by e-mail

You can choose to register the information below according to your needs.

- (1) Weather Warnings/Alerts

When at least one Special Warning, Warning or Alert has been announced  
 Special Warnings: Heavy Rain/Violent Winds/Heavy Snowfall/Snowstorm  
 Warnings: Heavy Rain/Flooding/Violent Winds/Heavy Snowfall/Snowstorm  
 Alerts: Heavy Rain/Flooding/Strong Winds/Heavy Snowfall/Wind and Snow/Lightning

- (2) River Water Level Information

If water level reaches a certain level or if water falls below a certain level

- (3) Tornado Alert Information

If a tornado warning is released for the Tokyo area

- (4) Meguro River Flood Warnings

If flood warnings are released for the Meguro River area

- (5) Mudslide Alert Information

If Landslide Alert Information is released to areas in the Meguro City

- (6) Weekly Weather Reports

Every Friday at 4:00pm a weekly weather report is released  
 \*sent to all registrants

- (7) Notices from the City

Notices related to the Meguro City mail service or system  
 \*sent to all registrants

\*Weekly weather reports and notices from the City cannot be unsubscribed from.

information: Repair Adjustment Subsection, Roads and Parks Section Tel: 5722-9775 Fax: 3712-5129

## Meguro River Flood Warnings

Disaster prevention warnings put out by the Tokyo government jointly with the National Meteorological Service, which provide instructions in the event of Meguro River flooding if it is likely to occur within one hour at the flooding reference point as a result of heavy rain.

If there is an announcement, residents in the Meguro River basin should be aware of flooding. Refrain from approaching the river, and seek refuge in higher areas, such as the second floor of a building. In particular, exercise ample caution in underground facilities as there is a risk of water ingress.

The city provides real time disaster alerts for sudden, abnormal weather phenomena occurring in the city (special warnings, warnings, weather alerts, river level conditions) to residents who have registered for the service via e-mail. Mail alerts on flood conditions are also available.

## Weather Reports on Disaster Prevention Including Emergency Warnings, Warnings, and Advisory Released By Japan Meteorological Agency

Japan Meteorological Agency has issued Weather Reports on Disaster Prevention, including weather warnings and advisory as well as weather information in order to prevent or reduce damage that may be caused by a disaster such as heavy rain or storm. Announcement criteria is defined based on the indicators closely connected with occurrence of disaster (such as wind velocity, tidal level and precipitation index). Criteria of warnings and advisory is defined by each municipality based on comprehensive researches of the past events or disaster occurred within the city.

Advisory: A case where there is a risk of disaster occurrence

Warnings: A case where there is a risk of serious disaster occurrence.

Emergency warnings: If there is significant risk of serious disaster due to heavy rainfall with a level of intensity, etc. exceeding the emergency warning criteria by far.

## About Typhoons and Wind

If wind speeds do not exceed 17m/s it is considered a tropical cyclone; any greater than this is classified as a “typhoon.” Even a tropical cyclone can bring heavy rain, so be sure to take care even in this event.

Typhoon Size (From the National Meteorological Agency)	
Naming Convention	Average Windspeed: 15m/s or greater radius
Large-Scale Typhoon (A big typhoon)	500km to 800km
Titanic Typhoon (An extremely big typhoon)	800km or greater

Expected Damage from Wind Strength (From the National Meteorological Agency)	
Windspeed 10 to 15	Whole trees and electric cables begin to sway.
Windspeed 15 to 20	Sign boards and corrugated walls begin to fall off.
Windspeed 20 to 25	A person cannot stand still unless holding on to something stable.
Windspeed 25 to 30	Running trucks roll sideways.
Windspeed 30 or greater	Some block walls fall down.

Typhoon Strength (From the National Meteorological Agency)	
Naming Convention	Maximum Windspeed (m/s)
Strong Typhoon	33 to 44
Extremely Strong Typhoon	44 to 54
Violent Typhoon	Greater than 54

Windspeed is roughly described.  
 (Average windspeed over a 10-minute period) Basic Measurement: meters/second

## Sandbags Stations around the City

Meguro City has placed 66 sandbag stations around the city, where you can take the number of sandbags you need in case of flooding. Note that there may not be enough sandbags on the day of flooding, so please prepare in advance. Once you have taken the sandbags you need, you should keep them in preparation for the next heavy rain. There are also five large-scale sandbag stations around the city, each stocked with 500 sandbags.

During emergencies, sandbags may be freely obtained at 66 locations within the city.

A map of the sandbag placement locations can be viewed using the QR code on the right.



### • Sandbag Installation Locations (As of March 2024)

Address	Installation Locations
Komaba1-2	Komaba1-2
Komaba2-1	Komaba Todai-Mae Station Area
Komaba3-8	Suizimon Area
Aobadai1-16	Asahibashi Area
Aobadai2-17	Yanagibashi Area
Aobadai3-19	Near Meguro-bashi
Higashiyama3-21-9	Higashiyama Park Expansion Part (※)
Ohashi2-2	Matsumizaka Area
Kamimeguro1-6	Hinodebashi Area
Kamimeguro1-15	Shukuyamabashi Area
Kamimeguro1-16	Shukuyamabashi Area
Kamimeguro1-17-4	Kami-ichi Disaster Prevention Space
Kamimeguro2-9-14	Meguro Fire Station Nakameguro Dispatch Center
Kamimeguro2-19-15	Meguro City Office Complex West Entrance
Kamimeguro2-19-15	Meguro City Office Complex in the South Entrance
Kamimeguro2-19-15	Meguro City Office Complex South Entrance Portecocheret (※)
Kamimeguro3-33	On the Jakuzure River Greenway
Kamimeguro4-17-25	Kamimeguro 4-chome Disaster Prevention Space
Kamimeguro4-36-29	Jakuzuregawa Nature Path Jakuzure Sagehashi
Nakameguro4-1-2	Meguro Waste Collection Operation Office
Mita1-4-6	Inside Mita Okanoue Park
Mita2-10-31	In Mita Park
Meguro2-4-36	Beside the Meguro Citizens Center parking lot
Meguro3-21	Below the Nature Park
Shimomeguro2-3	Near Taiko-bashi
Shimomeguro2-9	Near City boundary
Shimomeguro2-20	Otori Park
Shimomeguro3-10-22	In Meguro Fudo Disaster Prevention Square
Shimomeguro5-33-6	Inside Shimogo Children's Playground
Shimomeguro6-1-22	Meguro Fire Station
Shimomeguro6-9	Rinshinomori Park North Gate
Nakacho2-2	Yutenji Ura Intersection
Gohongi2-10	Under the Toyoko Line Elevated Railway

### ※Sandbag Stations

Address	Installation Locations
Chucho1-9-7	Disaster Prevention Center (※)
Meguro Honcho5-7-18	Azumacho-minami Children's Park
Meguro Honcho5-22-8	East side of Meguro Chuo Gymnasium
Minami2-1-40	Beside Takagi Jinja Shrine
Himonya2-11-14	Meguro Fire Station Himonya Dispatch Center
Himonya2-16-6	Ishibumi Juku Center
Himonya3-11-22	Suzume-no Oyado Ryokuchi Park (※)
Himonya6-9-11	Himonya Park
tairamachi1-25	On the Nomikawa Nature Path
tairamachi2-22	On the Nomikawa Nature Path
Ookayama1-35	On the Nomikawa Nature Path
Ookayama1-37-15	Meguro Fire Station Ookayama Dispatch Center
Midorigaoka1-21	On the Kuhonbutsugawa Nature Path
Midorigaoka2-6	On the Kuhonbutsugawa Nature Path
Midorigaoka2-16	On the Kuhonbutsugawa Nature Path
Midorigaoka3-3	On the Kuhonbutsugawa Nature Path
Midorigaoka3-10-37	Sakaibashi Machikado Park
Jiyugaoka2-12	On the Kuhonbutsugawa Nature Path
Jiyugaoka3-8	On the Kuhonbutsugawa Nature Path
Nakane2-6	Nakane Park
Kakinokizaka3-4	On the Kakinokizaka Branch Nature Path
Yakumo1-1	Meguro Citizens (Kumin) Campus Park Previous Sidewalk (※)
Yakumo1-5	On the Nomikawa Nature Path
Yakumo1-11	On the Nomikawa Nature Path
Yakumo2-7	On the Nomikawa Nature Path
Yakumo2-11	On the Nomikawa Nature Path①
Yakumo2-11	On the Nomikawa Nature Path②
Yakumo3-9	On the Nomikawa Nature Path
Yakumo3-13	On the Nomikawa Nature Path
Yakumo3-22	On the Nomikawa Nature Path
Yakumo3-29-14	Meguro Fire Station Yakumo Dispatch Center
Yakumo5-15-1	Yakumo Machikado Park
Higashigaoka1-31-23	Yoshikubo Machikado Park



Emergency Sandbag Storage Boxes

{ Lift up the four corners and remove the cover to take out the sandbag. }



Sandbag Stations (Higashiyama Park Expansion Part)

### Roads & Parks Service Office

Meguro Area Service Subsection

Tel. 3711-6825 Fax. 3793-4347

Himonya Area Service Subsection

Tel. 5721-7287 Fax. 3793-4347

## Enacting Flood Prevention Drills

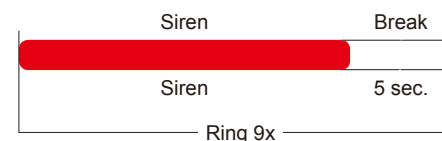
Every year in May, Meguro City holds flood prevention drills with the cooperation of area fire departments and fire brigades. We invite all city residents to participate or observe in order to learn how to better assist in flood disaster response.

## Be alert for the Meguro River weather alert siren.

The Meguro River water level is monitored by both flow measurement devices and water alert machines. A siren will sound if water reaches dangerous levels.

### 1 Cautionary Water Level Alert

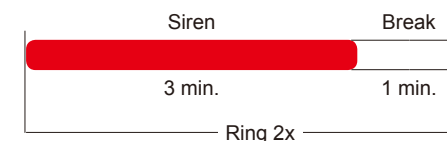
(when water of Meguro river reaches the level of 2.5 meter)



Announcement 「(chime) This is Meguro city office. Meguro river exceeded the warning water level and the alarm functioned. Please be cautious. I repeat. (repeat) (chime)」

### 2 Dangerous Water Level Alert

(when water of Meguro river reaches the level of 1 meter)



Announcement 「(chime) This is Meguro city office. Meguro river exceeded the dangerous water level and the alarm functioned. Please be cautious. I repeat. (repeat) (chime)」

## Regarding Evacuation Warning Announcements

- Evacuation Information and Needed Actions

There are five levels of evacuation information and needed actions. Please take the needed action according to the evacuation level. The Japanese term for evacuation, hinan, literally means "avoiding difficulty," which you can do by securing your safety in a disaster. If you are in a safe place, then you do not necessarily have to evacuate.

Warning Level	Evacuation Informations	Announcements	Actions to be taken by citizens
<b>Warning Level 5</b>	Emergency Safety Measures (etc. 1)	Issued by Meguro City	A disaster has already occurred or is about to occur. Take the best possible action to save your life.
~~~<Make sure you evacuate by Warning Level 4!>~~~			
<b>Warning Level 4</b> All persons to evacuate from a dangerous location	Evacuation orders	Issued by Meguro City	Evacuate from a dangerous location to an evacuation site, etc. 2 immediately. If getting to the evacuation site is dangerous, evacuate to a safe place nearby or a safer location in your residence (a higher floor, etc.).
<b>Warning Level 3</b> The elderly, etc. to evacuate from a dangerous location	Evacuation of the Elderly, etc.		People who need time to evacuate (the elderly, persons with disabilities, persons with infants, etc.) and the people supporting them should evacuate. Others should pause their usual activities as needed and evacuate themselves when they feel in danger.
<b>Warning Level 2</b>	Heavy Rain, Flood or Storm Surge Advisory	Announced by the Japan Meteorological Agency	Confirm in advance the evacuation actions you need to take using hazard maps and the like.
<b>Warning Level 1</b>	Early warning information		Have a disaster-prepared mindset.

Notes:

- Warning Level 5 is rarely issued for a number of reasons, such as municipal authorities being unable to accurately grasp the severity of a disaster.
- For persons who wish to evacuate in advance, voluntary evacuation sites and area evacuation sites (see p. 18) are available.

However, area evacuation sites are opened in specified locations according to the situation.

- How warnings will be announced

Warnings will be announced via the municipal disaster prevention wireless system, disaster and weather broadcast e-mail, TV and website.

e.g. "This is the Meguro Disaster Response Headquarters. At 00:00 a Warning Level 4 evacuation order was issued for XX cho XX chome. Please evacuate to XX.

## About My Timeline

My Timeline helps you decide in advance what actions to take in the event of a natural disaster such as a typhoon or heavy rain. Talk with your family and refer to "Tokyo My Timeline", a booklet published by the Tokyo Metropolitan Government, and create My Timeline to prepare for a natural disaster.

\*The booklet is available at the Meguro Disaster Prevention Center.

Disaster Prevention Section Tel. 5723-8700 Fax. 5723-8725

## Contact Info for Wind/Water Damage

- City Route Inlets/Gutters

Roads & Parks Service Office  
 Meguro Area Service Subsection Tel. 3711-6825 Fax. 3793-4347  
 Himonya Area Service Subsection Tel. 5721-7287 Fax. 3793-4347

- Metropolitan Route Inlets/Gutters

Tokyo Metropolitan Architectural Dept. Second Office, Meguro Engineering Division  
 Tel. 3715-3265

- Public Sewers/Wastewater Drains

Tokyo Metropolitan Wastewater Dept., South Wastewater Office, Meguro Dispatch Center  
 Tel. 3491-7867

- For Residential Buildings or Private Residences, contact your nearest Tokyo Wastewater Engineering Branch.

- Requests for Water Disaster Support Funds  
 Available in cases of water disaster, if you are the owner of property that has sustained damage, and if your address is within Meguro City. There are restrictions by income.

Consultation & Support Subsection, Welfare Section Tel. 5722-9855 Fax. 5722-9340

- Trash Management

Waste Collection Office Tel. 3719-5345 Fax. 3719-5064

- When disinfection is needed

Environment Sanitation Subsection, Sanitation Section Tel. 5722-9500 Fax. 5722-9508

- If Hazard Inspection is Necessary

Disaster Prevention Section Tel. 5723-8700 Fax. 5723-8725

- Health Consultations

Public Health Consultation Subsection Tel. 5722-9504 Fax. 5722-9508  
 Himonya Branch, Public Health Center Tel. 3711-6447 Fax. 5722-9330