

Initial evacuation sites (at the time of flooding)

No.	facility name	location	index
1	Komaba Elementary School	Komaba 3-11-13	C-2
2	Daiichi Junior High School	Ohashi 2-11-1	C-2
3	Sugekari Elementary School	Abodai 3-3-26	D-3
4	Higashiyama Junior High School	Higashiyama 1-24-31	D-3
5	Higashiyama Elementary School	Higashiyama 2-24-25	C-3
6	Karasumi Elementary School	Kamimeguro 3-37-27	D-3
7	Meguro School Support Center	Nakameguro 3-6-10	E-4
8	Nakameguro Elementary School	Nakameguro 3-13-32	D-4
9	Otori Junior High School	Shimomeguro 3-23-18	E-5
10	Fudo Elementary School	Shimomeguro 6-11-35	D-5
11	Kamimeguro Elementary School	Gohongi 1-12-13	D-4
12	Aburamen Elementary School	Nakacho 1-5-4	D-5
13	Meguro Chuo Junior High School	Nakacho 2-37-38	D-4
14	Gohongi Elementary School	Gohongi 2-24-3	C-4
15	Takaban Elementary School	Chuchoo 1-20-26	D-5
16	Himonya Gymnasium	Himonya 6-12-43	C-5
17	Gekkohara Elementary School	Megurohoncho 4-15-3	D-6
18	Dainana Junior High School	Himonya 1-1-33	D-6
19	Ishibumi Elementary School	Himonya 1-18-2	D-6
20	Haramachi Elementary School	Haramachi 2-18-12	D-7
21	Daiku Junior High School	Senzoku 1-29-26	D-7
22	Daihachi Junior High School	Himonya 4-19-25	C-6
23	Ookayama Elementary School	Tairamachi 2-3-1	C-7
24	Nakane Elementary School	Midorigaoka 1-1-1	B-7
25	Daijuichi Junior High School	Midorigaoka 1-8-1	B-7
26	Midorigaoka Elementary School	Midorigaoka 2-13-1	B-7
27	Miyamae Elementary School	Yakumo 3-13-21	A-7
28	Meguro Citizens Campus	Yakumo 1-1-1	B-6
29	Yakumo Elementary School	Yakumo 2-5-1	B-6
30	Daiju Junior High School	Yakumo 5-2-1	A-6
31	Higashine Elementary School	Higashigaoka 1-20-1	A-5



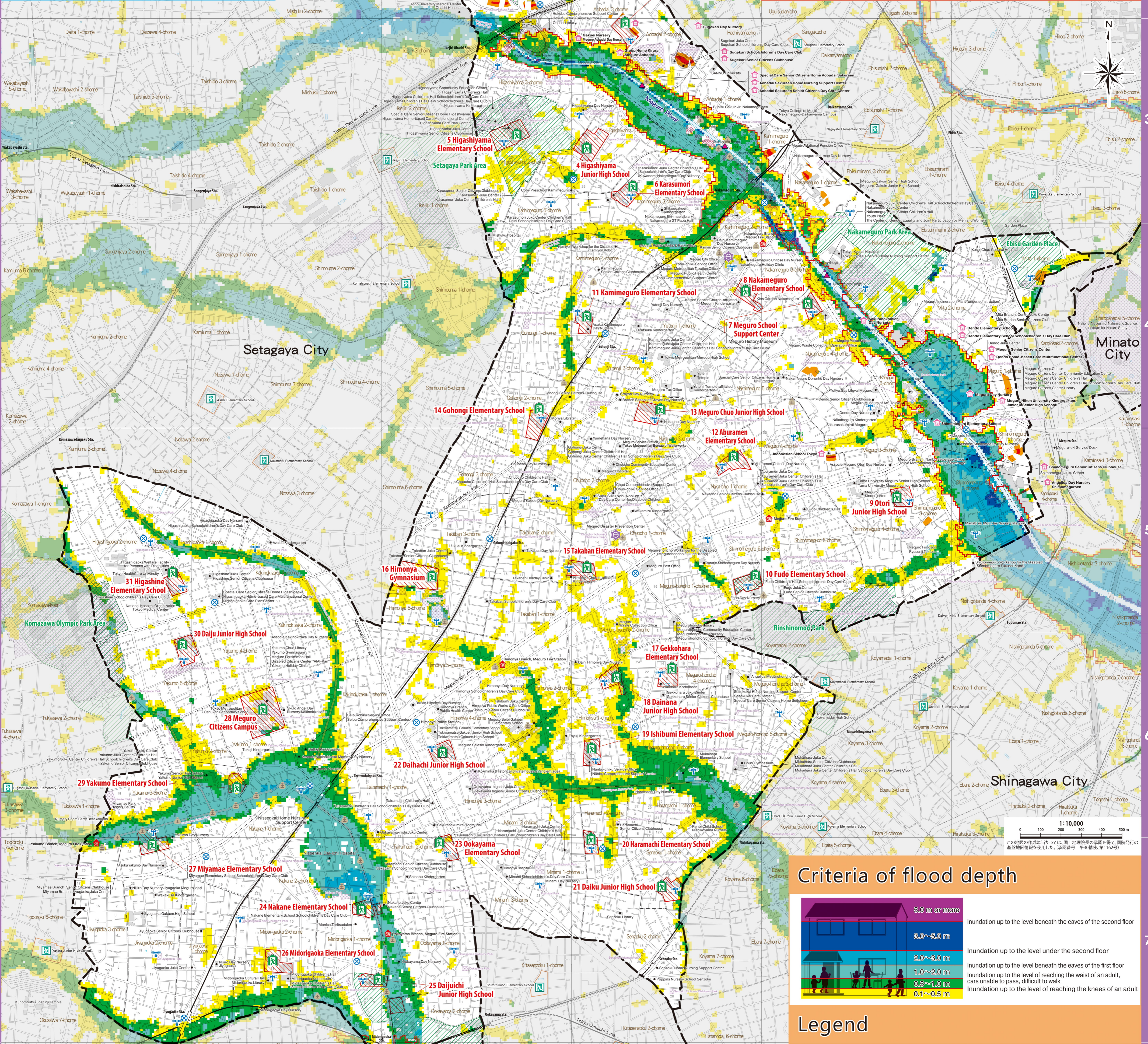
Meguro City Flood Hazard Map

Purpose of flood hazard map

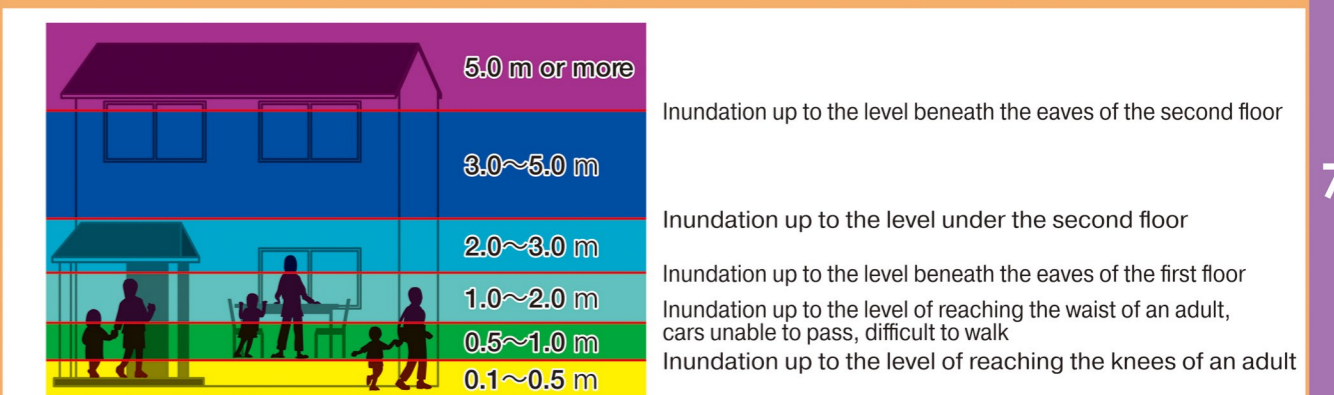
This flooding hazard map has been made based on the map of river basin areas in Jonan (the southern area of Tokyo) that are expected to be flooded (drawn by the Tokyo Metropolitan Government in December 2018), which jointly describes both inundation by swollen river and water inflow exceeding the sewage treatment capacity as a result of heavy rain. The map shows the areas that are expected to be flooded and the anticipated scale of flood damage, as well as evacuation sites for each area, so as to help residents to evacuate in emergencies.

The expected extent of flooding is calculated based on simulations assuming the maximum anticipated rainfall (where the total amount of rainfall is 690 mm, and the maximum amount of rainfall per hour is 153 mm).

Expected areas of flooding and flood conditions may change depending on various situations, including the types of rainfall, changes in land forms, conditions of river and sewage maintenance, and building structures. Therefore, it should not be assumed that the areas marked on the map as expected to be flooded will necessarily be flooded in the event of heavy rain. In addition, areas other than the areas marked on the map as expected to be flooded may possibly be flooded depending on the actual conditions, so all residents need to take precautions.



Criteria of flood depth



Legend

Expected water depth when flooding (rank category)	Initial evacuation sites (at the time of flooding)
5.0 m or more	Evacuation sites in the adjacent cities (within 500 m from the city boundary)
3.0~5.0 m	Open evacuation areas
2.0~3.0 m	Sandbags locations
1.0~2.0 m	Office Complex
0.5~1.0 m	Fire Stations and Fire Branch Stations
0.1~0.5 m	Police Stations and Koban (Police boxes)
Sediment disaster warning area and so forth	Administrative disaster prevention radio broadcasting tower
Sediment disaster warning area	Water level observatory
Sediment disaster special warning area	Facilities for those who need special care located in the Meguro River flood inundation risk area, sediment disaster warning area, and storm surge inundation risk area, which are stipulated in the regional disaster management plan of Meguro City
Flood inundation risk area when a river floods	
Flooding risk area including collapse of buildings	
* Area where intense flood flow with bursting levees, which may lead to collapsed or washed-away houses, is expected to occur	

List of disaster prevention related organizations

No.	facility name	Contact information	index
1	Meguro City Office	03-3715-1111	D-4
2	Meguro Police Station	03-3710-0110	E-4
3	Himonya Police Station	03-3794-0110	C-6
4	Meguro Fire Station	03-3710-0119	E-5
5	Tokyo Metropolitan Government	03-5321-1111	-
6	Tokyo Metropolitan Construction Bureau second construction office	03-3774-0313	-
7	Meguro Service Station, Tokyo Metropolitan Bureau of Waterworks	03-5773-6126	D-5
8	Nanbu Sewerage Office, Tokyo Metropolitan Bureau of Sewerage	03-5734-5031	-
9	NIT East (Accident/Maintenance)	113	-
10	TEPCO Power Grid - Customer Center	0120-995-002	-
11	Tokyo Gas - Customer Center	0570-002-211	-