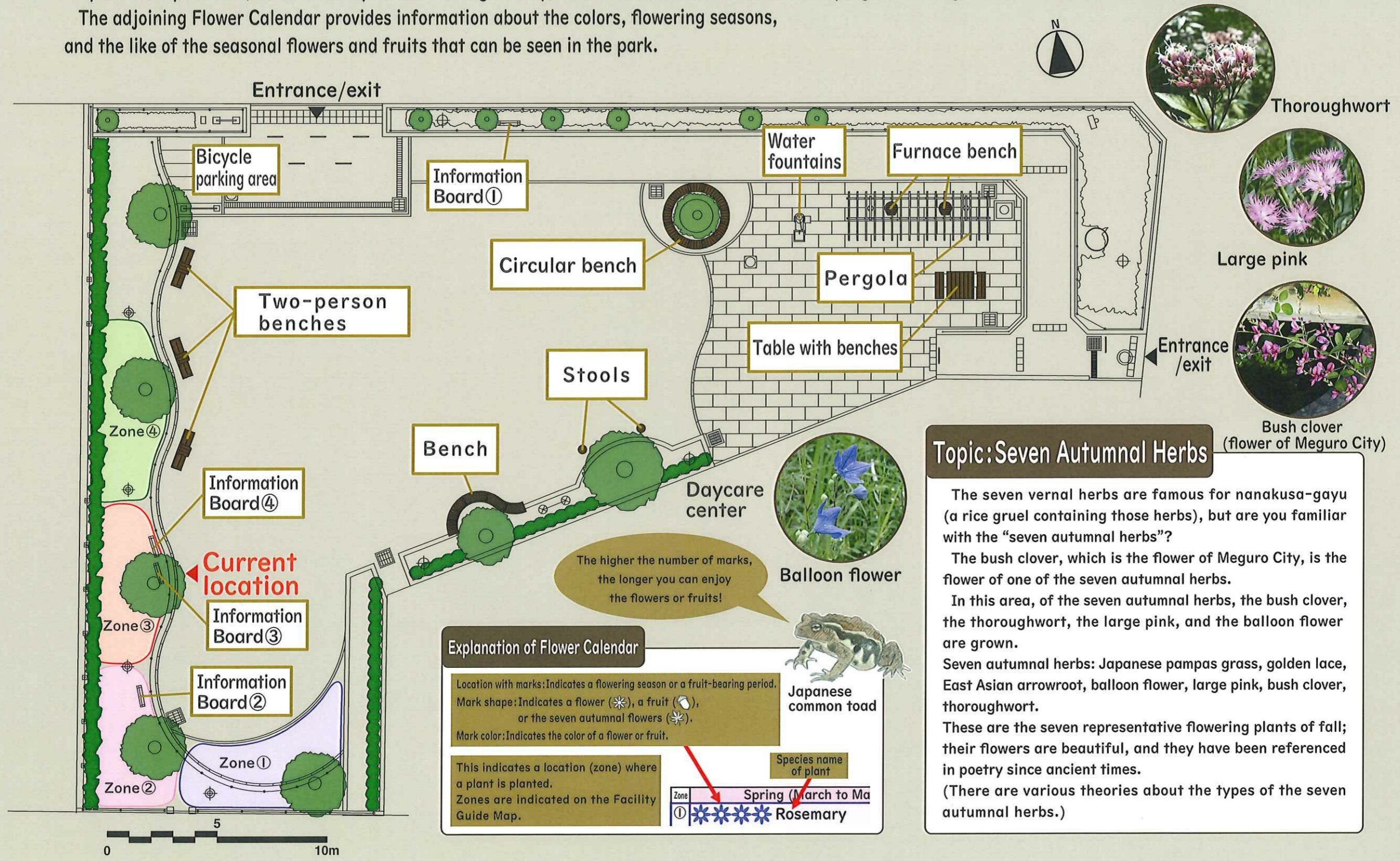


A diverse range of plants are grown in this area, allowing visitors to enjoy the colors and scents of flowers from the four seasons, as well as their bearing of fruit. Why not take your time, surrounded by the seasonal greenery, and relax on one of the benches or pergolas arranged in locations around the park?

The adjoining Flower Calendar provides information about the colors, flowering seasons, and the like of the seasonal flowers and fruits that can be seen in the park.



The higher the number of marks, the longer you can enjoy the flowers or fruits!

Explanation of Flower Calendar

Location with marks: Indicates a flowering season or a fruit-bearing period.
 Mark shape: Indicates a flower (✳), a fruit (🍎), or the seven autumnal flowers (✳).
 Mark color: Indicates the color of a flower or fruit.

This indicates a location (zone) where a plant is planted. Zones are indicated on the Facility Guide Map.

Zone	Species name of plant
Zone ①	Spring (March to May) ✳✳✳✳✳✳✳ Rosemary

Topic: Seven Autumnal Herbs

The seven vernal herbs are famous for nanakusa-gayu (a rice gruel containing those herbs), but are you familiar with the "seven autumnal herbs"?

The bush clover, which is the flower of Meguro City, is the flower of one of the seven autumnal herbs.

In this area, of the seven autumnal herbs, the bush clover, the thoroughwort, the large pink, and the balloon flower are grown.

Seven autumnal herbs: Japanese pampas grass, golden lace, East Asian arrowroot, balloon flower, large pink, bush clover, thoroughwort.

These are the seven representative flowering plants of fall; their flowers are beautiful, and they have been referenced in poetry since ancient times.

(There are various theories about the types of the seven autumnal herbs.)