

## Do you have any concerns about your child?

Has trouble getting involved in group activities at (nursery) school

Has many problems with friends

Unable to relax;  
Short attention span

Worried about vision  
Or hearing



Development might be a bit slow

Requires medical care, so I would like a nurse at the school

I'd like to know about special education classes & schools



I was advised to seek school placement advice from my child's school

I would like an expert's advice on choosing a school

It's perfectly normal to feel a little worried about school life or wonder what kind of learning environment would be best suited for your child as they enter elementary or junior high school.

In Meguro City, we provide opportunities for parents to freely discuss these anxieties and questions.

**Please feel free to contact us**



**School Enrollment Counseling  
Applications | Inquiries**

**Board of Education  
Secretariat  
Educational Support  
School Enrollment Counseling**

5th Floor, Meguro City Office Main Building  
2-19-15 Kamimeguro, Meguro-ku  
Tokyo 153-8573

TEL 03-5722-9305

FAX 03-3715-6951

► **School Enrollment Guidance**

From the Meguro City website

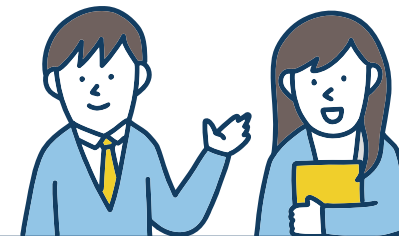
Download

**School Counseling Brochure** →



## Meguro City's School Enrollment Counseling

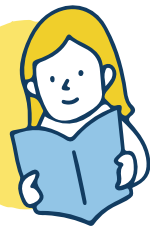
We will help you think through and decide on a learning environment where your child can feel safe and secure at school.



**Meguro City Board of Education**



# Places of Learning



## Come in all kinds of varieties

### Regular Classes

35 students per class  
Special education staff provided as necessary

#### Special Support Class

Available in all elementary and middle schools

Provides individual and small-group instruction for children who do not have general intellectual delays, but require some extra support due to autism, learning disabilities, ADHD, or emotional and behavioral difficulties.

#### Special Needs Class

Higashine Elementary  
Hearing and Speech Resource Room

Provides tailored instruction according to their needs for children who do not have general intellectual delays, but have hearing impairments, functional speech delays, or difficulties with pronunciation.

### Special Support Classes

8 students per class

Small classes are set up for each type of disability (For Meguro City: intellectual, physical, and autism/emotional disorders).  
Individualized education plans are tailored to each child's personal situation.

### Special Needs School

(Tokyo Metropolitan, National, etc.)

6 students per class

(8 students in high school, 3 students in severe disability classes)

The school is equipped with facilities and learning materials tailored to the type of disability (visual/hearing impairment, intellectual or physical disability).  
The school provides specialized instruction based on individualized education plans.

## School Enrollment Counseling Flow

### Applications | April - Sept

Online Form →  
Tel. | 03-5722-9305

※ Applications by phone  
accepted past October



! Strict deadlines for some classes  
Refer to brochure for details

### Meet placement counselor

\*Parents/Guardians Only\*  
We will ask about behavior and concerns.  
Necessary information will be provided.

### Submit required documents

\*One month before committee meeting\*  
Developmental assessment, necessary notebooks, medical records, etc.

### Placement committee

\*Parents/Guardians and Children\*  
Based on interviews and observations,  
we will find the most suitable learning  
environment for your child.

### Delivery of Results

Counseling will continue as necessary.  
Trial lessons may also be available.

### Decision on School

As much as possible, we will respect the  
opinions of the children and guardians.

### Enrollment Notice Arrival

\*From late December\*  
Will be sent following completion of  
enrollment counseling