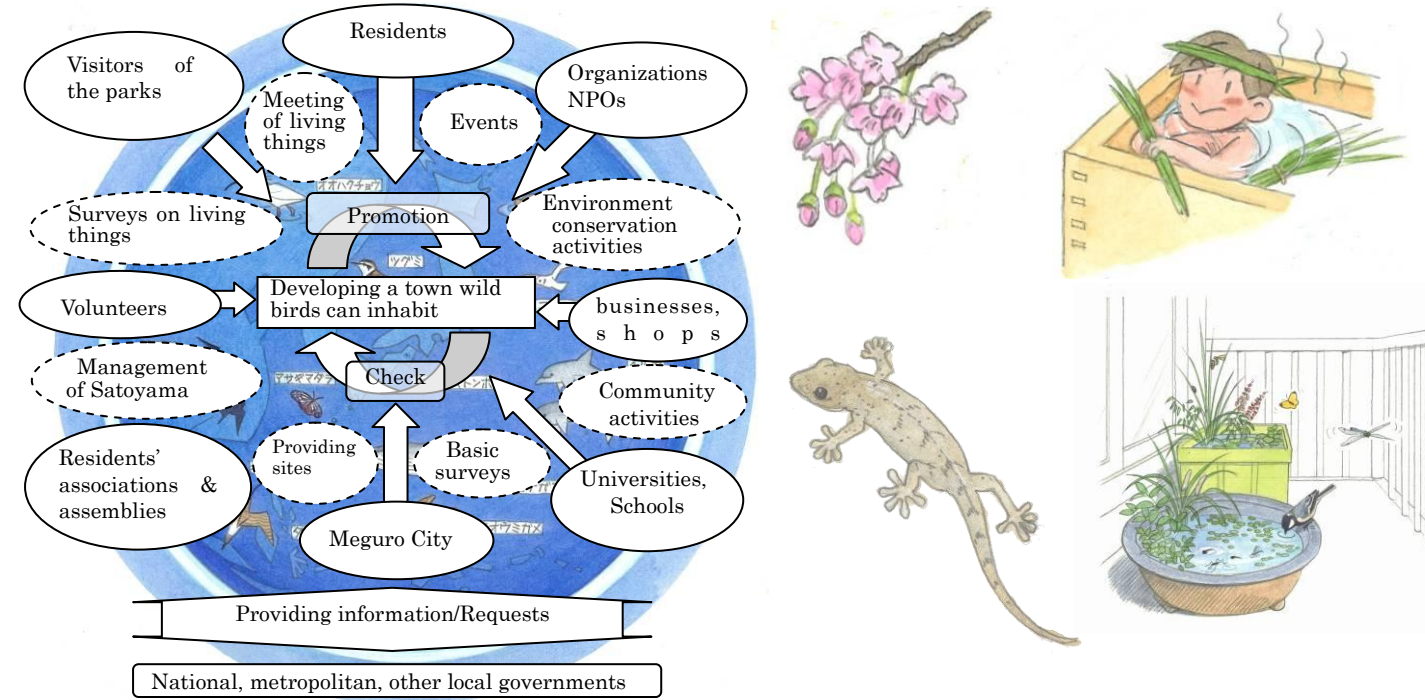


○ Check list by individuals (excerpt)  
To develop a town wild birds can inhabit, it is necessary that each of us all has self-awareness of being a leading player and pay due attention to biodiversity in the activities of daily life

Check item	Contents of the check	Checking
Green	Grow green nearby our houses; at the porch, veranda, etc.	
Water	Make use of rain water for gardening, etc.	
	Observe Meguro River to know living things there	
Food	Eat foods of local production, enjoy seasonal delicacies	
	Prepare only amount you can eat, and don't make remains of foods (food loss)	
Contact	Come into contact with nearby nature by walking on Green Passage for Walking to visit temples, shrines, and parks of Meguro	
	Participate in the park activities at Flower and Green Study Center, Nature Observation Center, Children's Animal Square, etc.	
Enjoy	Enjoy traditional seasonal events such as Hanami (cherry-blossom viewing), Syobuyu (bath with iris leaves), Tanabata (star festival), Tsukimi (full moon viewing),etc.	
Know	Know about local history and culture by visiting Meguro History Museum, Nature & Science Museum of the University of Tokyo, etc.	
Transmit	Feel splendor of seasonal changes and nature, and transmit it to others, and to the future, through photographs, pictures and writings.	
Protect	Refrain from using agrochemicals, chemical fertilizer, herbicides, etc. that affect ecosystem, to reduce loads on habitat environment for living things	
Select	Go shopping taking an ecobag with you, and select eco-friendly goods with Eco Labels	
Review	Take time to review landscape around you while going out in town on foot and by bike	
Living things	Take care of pets with responsibility to the end of their lives	
	No feeding wild lives outdoors	
Activities	Enhance residents' understanding of biodiversity, and seek to coordinate and collaborate with other local governments and residents of the communities	
	Green rooftops, outer walls, terraces, etc. of stores and office buildings	

○Establishing a system to implement the plan by the efforts of us all

To promote “A Cycle of Lives Supporting One Another: Plan for Developing A Town Wild Birds Can Inhabit”, it is important that each entity concerned play its role. Meguro City will make efforts to lay groundwork for the promotion of the plan through establishing the place for information sharing/exchange, and support system necessary for the coordination among various entities concerned.



○ Living things in Future Image of Meguro **BIRDS:** Narcissus flycatcher, Goshawk, House swallow, Brown hawk owl, Common kestrel, Common kingfisher, Azure-winged magpie, Great tit, Black-headed gull, Grey heron, Great cormorant, Grey wagtail **FISH:** Japanese eel, Ayu fish **ANIMALS:** Japanese gecko, Japanese five-lined skink, Japanese common toad, Raccoon-dog **INSECTS:** Jewel beetle, Honey bee, Stag beetle, Beetle, Common skimmer, Golden-ringed dragonfly, Common grass yellow, Grasshopper

**Meguro City Regional Biodiversity Strategy (Overview in English)**  
**A Cycle of Living Supporting One Another: Plan for Developing A Town Wild Birds Can Inhabit (Overview)**  
**Publication Date : March 25, 2014**  
Greenery Sub-Section, Parks & Greenery Section, Urban Planning & Development Department, Meguro City  
Kamimeguro 2-19-15, Meguro, Tokyo 153-8573 Tel. 03-5722-9359 Fax. 03-3792-2112  
Meguro City Biodiversity Strategy (PDF files in Japanese or English) is downloadable at the site below:  
[https://www.city.meguro.tokyo.jp/gyosei/keikaku/keikaku/kankyo\\_hozen/tayosei/chiikisenryaku.html](https://www.city.meguro.tokyo.jp/gyosei/keikaku/keikaku/kankyo_hozen/tayosei/chiikisenryaku.html)

# A Cycle of Lives Supporting One Another: Plan for Developing A Town Wild Birds Can Inhabit

In Meguro City, natural environment has been changing, as exemplified by the decline of the number of trees. Even under such circumstances, various creatures live in nearby places, such as gardens and parks. Meguro City Regional Biodiversity Strategy, “A Cycle of Lives Supporting One Another: Plan for Developing A Town Wild Birds Can Inhabit”, is a plan to protect our familiar nature, and to hand down our town where we can live in harmony with living things, to the future generations.

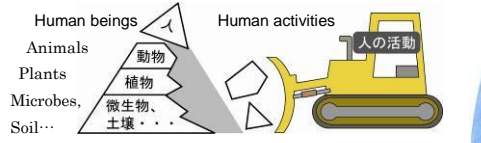
○ **Wild bird as a symbol**

- **A symbol of connecting greens**  
We regard wild birds that migrate among scattered greens, and depend on green spaces for living, as a symbol of the formation of an ecological network.
- **A symbol of transforming greens into those where living things can live**  
The more the variety and the number of plants and little creatures such as insects that are foods for birds, the more the number of species of wild birds that can live in those more suitable environment. In this sense, we regard wild birds as a symbol of transforming the qualities of greens, not to mention increasing the amount, into those where more living things can live.
- **A symbol of developing a town familiar with citizens**  
Wild birds could be a motive for us to aim at the society where biodiversity is conserved even in the familiar and nearby places, and people live in harmony with nature. In this sense, we regard wild birds as a symbol of developing a town and residents' activities there.

○ **What is biodiversity**  
Biodiversity means that there are various types of nature on earth, and in each nature there are many living things having unique character, and that the lives of living things are closely connected and interrelated. “The blessing of nature” or so called “ecosystem service” that is conducive to the supply of food and water, the stabilization of temperature, etc., water purification, and providing people with affluence and comfort, is dependent on the balance of biodiversity. However, recently it has been feared that stresses from people’s consumption and other activities might result in biodiversity loss and serious, irredeemable changes in the global ecosystem.

## ○ Four crises of biodiversity

**Crisis brought about by human activities such as developments**  
Habitats of creatures have been reduced or lost through developments giving priority to efficiency and economy, and through overfishing for ornamental and commercial use.



**Crisis brought about by reduced human approaches to the nature**  
Satochi-Satoyama, woodlands or grassland near human settlements managed by humans, nurtured various living things characteristic of its environment, but changes in environmental quality in Satochi-Satoyama areas due to reduced and discontinued human approaches to the nature has greatly affected the kinds of creatures living there.



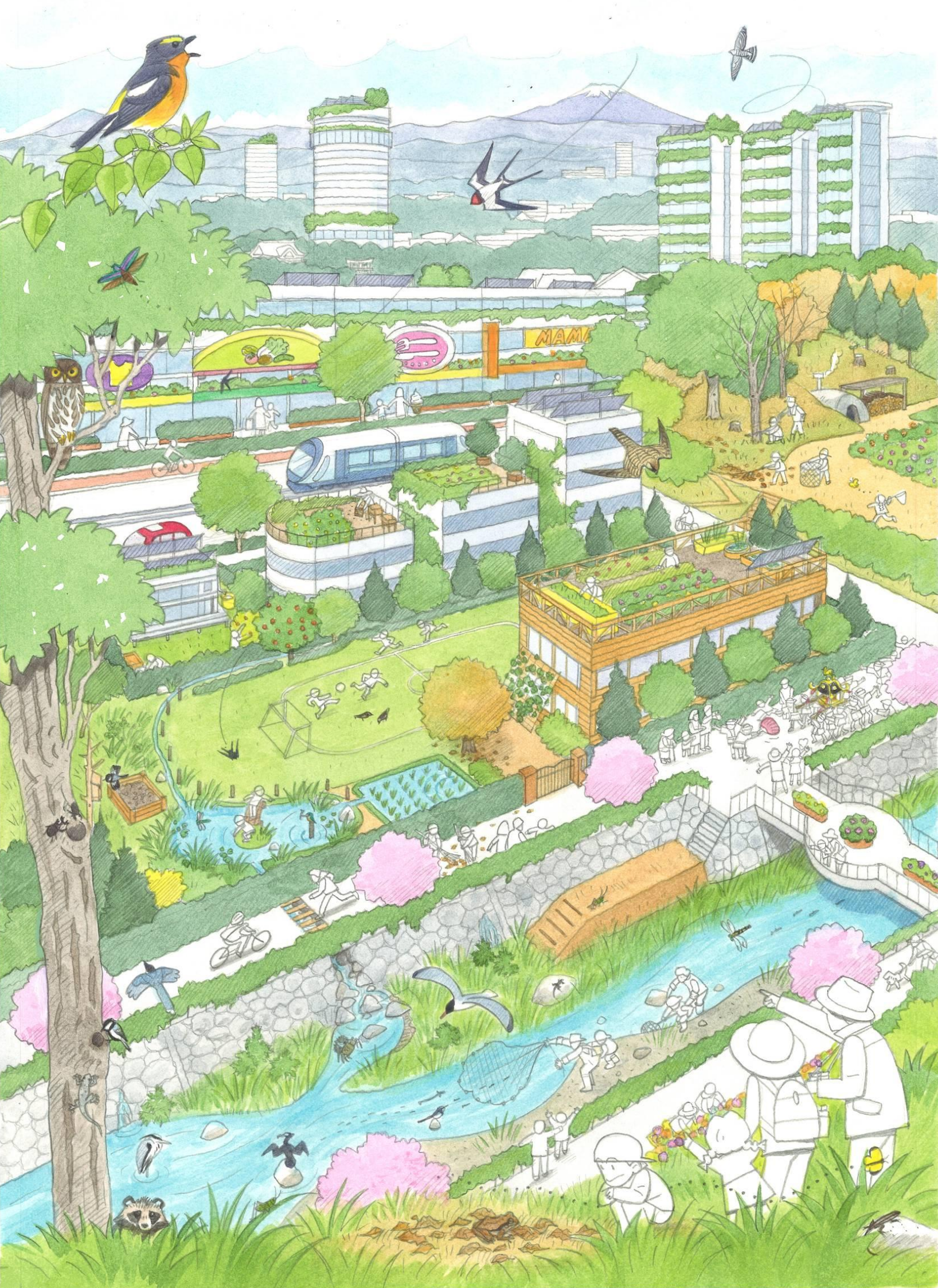
**Crisis brought about by artificially-introduced factors**  
Artificially-introduced factors from other areas including alien species, have greatly affected the indigenous ecosystem



**Crisis brought about by the environmental change of the earth**  
It is predicted that the risk of extinction of many creatures on earth is high due to climate change, including a change of phenology caused by global warming, and a change of the amount of precipitation caused by global warming.



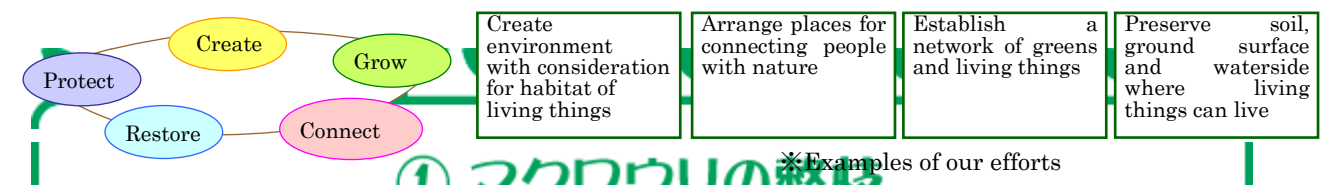




## Future Visions of Meguro : A Town Where Songs of Wild Birds Are Heard

- We see lush and affluent greens in residential areas and on the rooftops of buildings, and also plentiful trees in the streets. There, we come upon various wild birds from season to season, including great tit, a bird of the city.
- We enjoy changeable nearby nature, such as flowers in spring, colored leaves of autumn, local festivals from season to season, and also enjoy foods of the season.
- People are enjoying flower and vegetable gardening, and also enjoying a harvest of crop even in the urbanized areas. In the family gardens, and on the rooftops and in the parks, people are harvesting vegetables.
- Successors to the traditional culture of Meguro, including traditional Japanese flower arrangement and tea ceremony, have been reared. Besides, the art of traditional musical accompaniment and sword dancing of Meguro is being handed down to local residents of all ages.

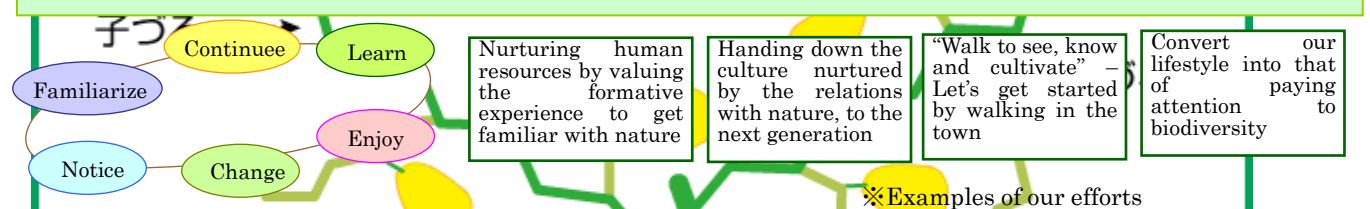
### Target 1: Preserving green landscape, and creating environment friendly to living things



- We protect the environment for habitats of native plants such as violets by managing copse.
- We preserve soil and ground where living things can live by minimizing pavement in parks and public facilities, etc.
- We restore the environment of waterside by establishing biotope ponds where dragonflies and the like can live, and by the activities there.
- We promote planting design in which we feel four seasons and things in season, such as flowers, fruits, colored leaves, and so forth.
- We create environment that invites wild birds and insects, by putting planters, basins, etc. on verandas.
- We promote citizens' understanding of living creatures, by continuing researches on living things with the help of citizens' participation



### Target 2: Handing down Life of Meguro that values people's contact with nature, to the future



- We promote public awareness on the principles of alien species, that is, no entering, no abandoning, no spreading
- We get familiar with green, through volunteer activities such as those in the parks and those of Green Club, which makes and manages flowerbeds in the parks, on the roadsides, etc.
- We change present lifestyle of ours which uses water and foods more than are necessary, with a view of "Mottainai, or What a waste!"
- We enjoy cherry blossoms viewing in spring and colored leaves in autumn, going to the parks and Meguro River, etc.
- We continue to observe nearby nature, in order to grasp the changes of environment for living things



### Target 3: All entities cooperate and coordinate with one another in every activity, to secure "A Cycle of Liver Supporting One Another"



- We get to know nearby living things through participating in walking events to observe nature of the town, and Children's Expedition into Life in Meguro
- Each of us at homes, businesses, schools, etc. will put the activity into practice with concept of paying attention to biodiversity
- We participate in the activities of Registered Residents' Groups for the Activities in the Parks
- We make the forests by raising seedlings that are grown from acorn by the residents



※ Citizens, organizations, businesses, schools, administrative bodies, etc. will address these efforts by the way of participation, support, and coordination.  
© Let's look for living creatures in Future Image of Meguro (answer is on back page)