

4 Preparing for Wind & Water Disasters

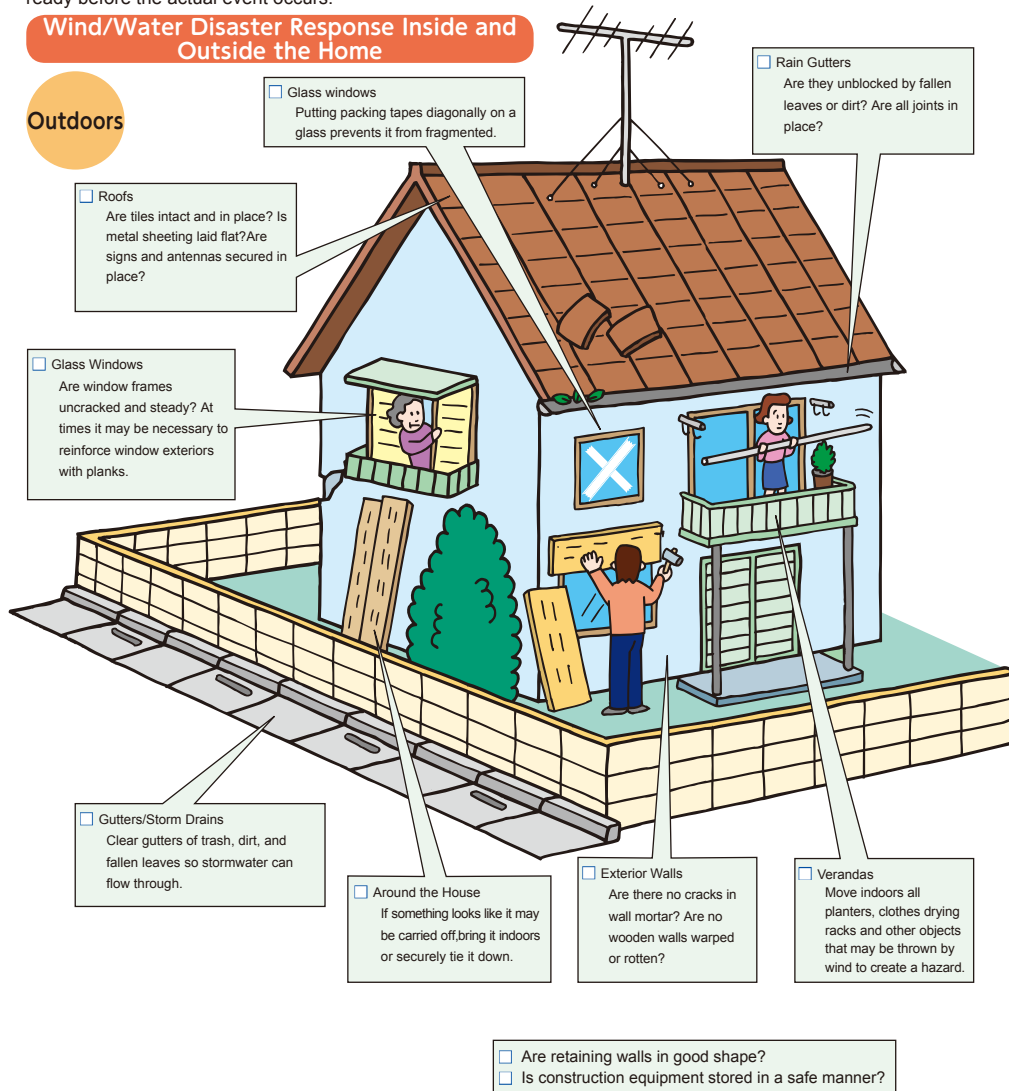
Household Preparations

Household Preparations for Wind & Water Disaster

Wind and water disasters caused by typhoons and concentrated rainfall can have a large impact on the lives of city residents. While staying prepared by being aware of weather developments, we should have a response plan ready before the actual event occurs.

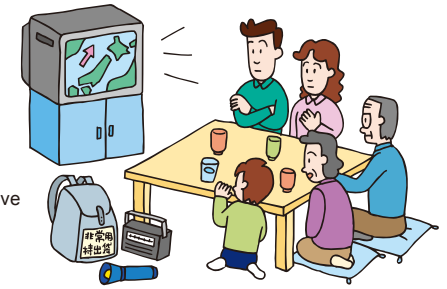
Wind/Water Disaster Response Inside and Outside the Home

Outdoors



Indoors

- Prepare flashlights and pocket radios.
- Prepare important emergency/survival items.
- Take notice of weather alerts and don't unnecessarily leave the house.
- Guarantee stores of food and water.
- As there is a chance of indoor flooding, move all appliances and food to a high place.
- Take elderly, infants and sick family members to a safe location.



Underground Spaces

For Those with Basements Underground Parking Areas

- In low areas or basins, where water can easily flow in, pile sandbags or use boards to stop water.

Water can break through in an instant and make you a victim without you realizing it! During monsoon season, pay close attention to weather alerts, and prepare sandbags and planks so you can respond quickly.

When external conditions cannot be determined from indoors, water pressure may prevent doors from being opened, and there is concern that water may begin to flow inside. In addition, lights may go out and elevators may become inoperable.



Could this Happen in Underground Areas During a Flood?



When Can Water Disasters Occur?

- When rivers overflow their banks

In Tokyo, improvements are being made to riverbanks to allow for 75mm of rain per hour to be absorbed, and storm drain flow is likewise being improved. Thanks to this, river flooding has decreased, but the risk of overflowing remains during periods of heavy rainfall in a short period, or a sudden rise in water level in a specific area.

- If wastewater counter-currents cause manholes to overflow

Because concrete and asphalt covers much ground surface, rainwater is often not absorbed by the earth. Due to this, rainwater can concentrate quickly in sewers and riverbeds without being fully drained off by basins or pipes, causing water disasters to occur even without river flooding.

- Basement Flooding

As rainwater flows in to basements or underground parking areas, incomplete drainage causes increase in water disasters.

Regarding Evacuation Warning nouncements

- How warnings will be announced

Warnings will be announced via the municipal disaster prevention wireless system, disaster and weather broadcast e-mail, TV and website.

e.g. "This is the Meguro Disaster Response Headquarters. At 00:00 a level 4 warning has been issued for XX cho XX chome. Residents of the area are recommended to evacuate. Please evacuate to XX.

Warning Level	Actions for residents to take	Evacuation Information
Warning Level 5	A disaster has already occurred. Take the best action to protect your life.	Information on disaster occurrence
Warning Level 4 All residents are to evacuate	Evacuate immediately to an evacuation point. If getting to the evacuation point is considered dangerous, move to a shelter nearby.	Evacuation Orders (urgent) (※1) Evacuation Advice
Warning Level 3 The elderly, etc. are to evacuate	Those needing time to evacuate (the elderly, the disabled, children, etc.) and their care givers are to evacuate. Others should prepare to evacuate.	Evacuation Preparedness The elderly, etc. are to start evacuation
Warning Level 2	Prepare for evacuation, check actions for you to take using a hazard map etc.	
Warning Level 1	Be aware of updated information.	

※1 An evacuation order (urgent) is issued only in the event of an emergency when, for example, the advice to evacuate is repeated, and is therefore not necessarily announced. Do not wait for an evacuation order (urgent) but evacuate as soon as evacuation is advised.

- If evacuation advice is announced, act promptly and evacuate depending on the situation.
- Evacuate to the nearest evacuation point (※2)
- Take refuge at a safe place and building nearby
- Take shelter inside of a building (move to the safest room in the building)

※2 Voluntary shelters and regional shelters are available for those who wish to evacuate in advance (see page 18). However, regional shelters may be opened only at specific locations depending on conditions.

information: Disaster Prevention Section Tel: 5723-8700 Fax: 5723-8725

Take Notice of Weather Alerts

Typhoons bring along violent winds and heavy rain. The period when concentrated flooding often occurs is the latter half of the summer rainy season. Even if the sun is shining, when atmospheric conditions are unstable, deluge-like rain can suddenly occur in a very limited area.

- Meguro City Weather (Disaster Prevention Weather Reports)

You can find out Meguro area weather and rainfall reports and river flow levels on the Meguro City homepage.

For detailed information, visit the Meguro City Homepage (Refer to Meguro City Weather <Disaster Prevention Weather Reports>).

- Disaster Prevention Weather Reports—Automated E-mail Service

An automated email service providing disaster prevention weather information such as abnormal weather conditions is delivered to residents if requested. Information provided includes (1) weather warnings and alerts, (2) river water levels, (3) tornado warning information, (4) Meguro River flood information, (5) landslide warning information, (6) weekly forecasts, and (7) announcements from the city, and residents are able to select the information they require out of the above. Register on the city website if using a PC, or scanning the QR code to the right if using a cell phone.



QR code for cell phone use

information: Maintenance Management Subsection, Roads and Parks Section Tel: 5722-9775 Fax: 3712-5129

Meguro River Flood Warnings

Disaster prevention warnings put out by the Tokyo government jointly with the National Meteorological Service, which provide instructions in the event of Meguro River flooding if it is likely to occur within one hour at the flooding reference point as a result of heavy rain.

If an alert is issued, residents of the Meguro River basin should be vigilant of flooding and evacuate to the upper floors of a nearby building. Residents should remain particularly aware of the heightened risk of flooding in underground structures.

The city provides real time disaster alerts for sudden, abnormal weather phenomena occurring in the city (special warnings, warnings, weather alerts, river level conditions) to residents who have registered for the service via e-mail. Mail alerts on flood conditions are also available.

Information: Maintenance Management Subsection, Roads & Parks Section Tel. 5722-9775 Fax. 3712-5129

Weather Reports on Disaster Prevention Including Emergency Warnings, Warnings, and Advisory Released By Japan Meteorological Agency

Japan Meteorological Agency has issued Weather Reports on Disaster Prevention, including weather warnings and advisory as well as weather information in order to prevent or reduce damage that may be caused by a disaster such as heavy rain or storm. Announcement criteria is defined based on the indicators closely connected with occurrence of disaster (such as wind velocity, tidal level and precipitation index). Criteria of warnings and advisory is defined by each municipality based on comprehensive researches of the past events or disaster occurred within the city.

Advisory: A case where there is a risk of disaster occurrence

Warnings: A case where there is a risk of serious disaster occurrence.

Emergency warnings: If there is significant risk of serious disaster due to heavy rainfall with a level of intensity, etc. exceeding the emergency warning criteria by far.

About Typhoons and Wind

If wind speeds do not exceed 17m/s it is considered a tropical cyclone; any greater than this is classified as a "typhoon." Even a tropical cyclone can bring heavy rain, so be sure to take care even in this event.

Typhoon Size (From the National Meteorological Agency)	
Naming Convention	Average Windspeed: 15m/s or greater radius
Large-Scale Typhoon (A big typhoon)	500km to 800km
Titanic Typhoon (An extremely big typhoon)	800km or greater

Typhoon Strength (From the National Meteorological Agency)	
Naming Convention	Maximum Windspeed (m/s)
Strong Typhoon	33 to 44
Extremely Strong Typhoon	44 to 54
Violent Typhoon	Greater than 54

Expected Damage from Wind Strength (From the National Meteorological Agency)	
Windspeed 10 to 15	Whole trees and electric cables begin to sway.
Windspeed 15 to 20	Sign boards and corrugated walls begin to fall off.
Windspeed 20 to 25	A person cannot stand still unless holding on to something stable.
Windspeed 25 to 30	Running trucks roll sideways.
Windspeed 30 or greater	Some block walls fall down.

Windspeed is roughly described. (Average windspeed over a 10-minute period) Basic Measurement: meters/second

The city will distribute sandbags.

There are several steps needed to ensure protection from flooding. Preparing on the day of the disaster will not give you enough time - plan in advance!

Meguro Public Works & Park Office Tel. 3711-6825 Fax. 3793-4347
Himonya Public Works & Park Office Tel. 5721-7287 Fax. 5721-6175

During emergencies, sandbags may be freely obtained at 50 locations within the city.

• Sandbag Installation Locations

Address	Installation Locations
Komaba2-1	Komaba Todai-Mae Station Area
Komaba3-8	Suizimon Area
Komaba1-2	Komaba1-2
Ohashi2-2	Matsumizaka Area
Aobadai2-17	Yanagibashi Area
Aobadai1-16	Asahibashi Area
Kamimeguro1-15	Shukuyamabashi Area
Kamimeguro1-16	Shukuyamabashi Area
Kamimeguro1-6	Hinodebashi Area
Kamimeguro1-17-4	Kami-ichi Disaster Prevention Space
Kamimeguro2-48-2	Meguro Public Works & Park Office
Kamimeguro2-19-15	Meguro City Office Complex West Entrance
Kamimeguro2-19-15	Meguro City Office Complex South Entrance
Kamimeguro2-19-16	Meguro City Office Complex Parking Lot
Shimomeguro6-9	Rinshinomori Park North Gate
Shimomeguro6-1-22	Meguro Fire Station
Kamimeguro2-9-14	Fire Station Nakameguro Dispatch Center
Shimomeguro2-20-19	Otori Park
Nakameguro4-1-2	Meguro Waste Collection Operation Office
Gohongi2-10	Under the Toyoko Line Elevated Railway
Nakacho2-2	Yutenji Ura Intersection
Chucho1-9-7	Front of Disaster Prevention Center
Meguro3-21	Below the Nature Park
Kamimeguro4-17-25	Kamimeguro 4-chome Disaster Prevention Space
Kamimeguro4-36-29	Jakuzuregawa Nature Path Jakuzure Sagehashi
Himonya6-9-11	Himonya Park
Himonya2-16-6	Ishibumi Juku Center
Meguro Honcho5-7-18	Azumacho-minami Children's Park
Himonya2-11-14	Fire Station Himonya Dispatch Center

Address	Installation Locations
Higashigaoka1-31-1	Yoshikubo Machikado Park
tairamachi1-25	On the Nomikawa Nature Path
tairamachi2-22	On the Nomikawa Nature Path
Ookayama1-35	On the Nomikawa Nature Path
Nakane2-6-33	Nakane Park
Midorigaoka2-6	On the Kuhonbutsugawa Nature Path
Midorigaoka2-16	On the Kuhonbutsugawa Nature Path
Midorigaoka1-21	On the Kuhonbutsugawa Nature Path
Midorigaoka3-3	On the Kuhonbutsugawa Nature Path
Midorigaoka3-9-37	Sakaibashi Machikado Park
Yakumo5-15-1	Yakumo Machikado Park
Yakumo3-29-14	Fire Station Yakumo Dispatch Center
Yakumo3-22	On the Nomikawa Nature Path
Yakumo3-13	On the Nomikawa Nature Path
Yakumo3-9	On the Nomikawa Nature Path
Yakumo2-11	On the Nomikawa Nature Path (2 places)
Yakumo2-7	On the Nomikawa Nature Path
Yakumo1-11	On the Nomikawa Nature Path
Yakumo1-5	On the Nomikawa Nature Path
Ookayama1-37-15	Fire Station Ookayama Dispatch Center



Emergency Sandbag Storage Boxes

Enacting Flood Prevention Drills

Every year in May, Meguro City holds flood prevention drills with the cooperation of area fire departments and fire brigades. We invite all city residents to participate or observe in order to learn how to better assist in flood disaster response.

Be alert for the Meguro River weather alert siren.

The Meguro River water level is monitored by both flow measurement devices and water alert machines. A siren will sound if water reaches dangerous levels.

1 Cautionary Water Level Alert

(when water of Meguro river reaches the level of 2.5 meter)

Siren	Break
15 sec.	5 sec.

Ring 9x

Announcement 「(chime) This is Meguro city office. Meguro river exceeded the warning water level and the alarm functioned. Please be cautious. I repeat. (repeat) (chime)」

2 Dangerous Water Level Alert

(when water of Meguro river reaches the level of 1 meter)

Siren	Break
3 min.	1 min.

Ring 2x

Announcement 「(chime) This is Meguro city office. Meguro river exceeded the dangerous water level and the alarm functioned. Please be cautious. I repeat. (repeat) (chime)」

Contact Info for Wind/Water Damage

• City Route Inlets/Gutters

Meguro Public Works & Park Office Tel. 3711-6825 Fax. 3793-4347
Himonya Public Works & Park Office Tel. 5721-7287 Fax. 5721-6175

• Metropolitan Route Inlets/Gutters

Tokyo Metropolitan Architectural Dept. Second Office, Meguro Engineering Division
Tel. 3715-3265

• Public Sewers/Wastewater Drains

Tokyo Metropolitan Wastewater Dept., South Wastewater Office, Meguro Dispatch Center
Tel. 3491-7867

- For Residential Buildings or Private Residences, contact your nearest Tokyo Wastewater Engineering Branch.
- Requests for Water Disaster Support Funds
Available in cases of water disaster, if you are the owner of property that has sustained damage, and if your address is within Meguro City. There are restrictions by income.

Consultation & Support Subsection, Welfare Section Tel. 5722-9855 Fax. 5722-9340

• Trash Management

Waste Collection Office Tel. 3719-5345 Fax. 3719-5064

• When disinfection is needed

Environment Sanitation Subsection, Sanitation Section Tel. 5722-9500 Fax. 5722-9508

• If Hazard Inspection is Necessary

Disaster Prevention Section Tel. 5723-8700 Fax. 5723-8725

• Health Consultations

Public Health & Infection Control Section Tel. 5722-9504 Fax. 5722-9508
Himonya Branch, Public Health Center Tel. 3711-6446 Fax. 5722-9330